



FLOATERRA

ADVANCED SELF LEVELING FLOORING SYSTEM

Floaterra is a multipurpose sinker-floater, self-leveling floor coating for both decorative and light industrial uses. Self-leveling coatings are an excellent option for worn or deteriorating surfaces, providing a seamless, wall-to-wall flooring solution. Floaterra is highly durable, sustainable, and an aesthetically beautiful look for any surface.

What are sinker-floater coatings?

Sinker-floater coatings are self-leveling epoxy coatings. Floaterra's sinker-floater coating is designed to simplify the application process, requiring fewer steps than broadcast system coatings while delivering an attractive finish.

Unlike other self-leveling epoxies, Floaterra is engineered with materials of two different densities. During curing, the higher-density resin mix settles below the surface, while the lower-density color additive rises, creating a distinctive appearance. Once cured, the coating hardens to a durable satin finish, offering a surface that is resistant to abrasions and chemicals while being easy to clean.

Benefits

- Excellent Bonding
- Chemical Resistant
- Good Abrasion Resistance
- Solvent-free and environmentally friendly
- Easy to apply using a notched squeegee or notched trowel
- Cures in the presence of moisture and humidity with excellent mechanical properties
- Odour Free
- Satin Finish
- Pigment free, minimum risk of bleaching or fading
- Flowing liquid for self-leveling

Product Information

	Epoxy
Coverage	75 sq ft. (7 m ² @ 40 mils 1.5mm)
	55 sq ft. (5.25 m ² @ 60 mils 2mm)
Thickness	1.5mm - 4mm
Pot life	30 min @ 68°F/20°C
Tack free	7-8 hour @ 68°F/20°C
Open to traffic	24 hours @ 68°F/20°C
Full chemical cure	7 days @ 68°F/20°C
Packaging	15kg kit / 33lb kit

Technical Information

	Epoxy
Adhesion testing to BS ISO 4624:2003	
Concrete: Dry	21. N/mm ² @73°F/23°C

Slip Resistance

	Epoxy
TRRL Pendulum Tester	PTV
Dry	39.1
Wet	21.2

Custom Colors

Our Floaterra system includes an option of color to be added to the epoxy. Since the color adds opacity, the coating still has an exceptional, eye-catching appearance.

Durable and Practical

Floaterra is a seamless 'wall-to-wall' application. Not only does this hide most minor surface cracks, pits, and other imperfections that may exist in the flooring, but it also allows the floor to be easily cleaned by simply washing with a hose or with approved chemical cleaners. Additionally, Floaterra stands up against most chemicals commonly found in garages, labs, and manufacturing sites, perfect for any area exposed to foot or vehicular traffic.

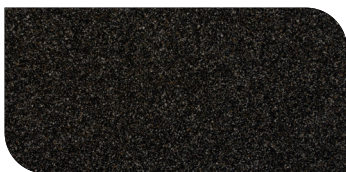
Versatility

Floaterra was designed with residential applications in mind but is versatile enough for commercial use. The Floaterra system is available in eight universally attractive colors.

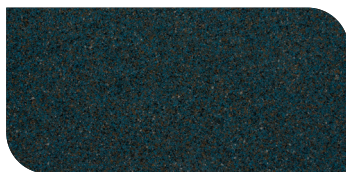
Common Uses

- Commercial Garages
- Residential Garages
- Basements
- Athletic Facilities
- Laboratories
- Laundromats
- Salons
- Retail Shops
- Bathrooms
- Kennels

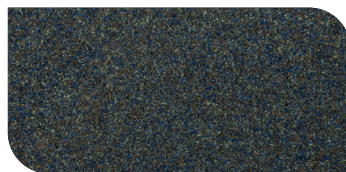
Floaterra Colours



ASH



NAPLES



SEAGLASS



GLACIER



COCONUT



COASTAL



STONE HARBOR



DRIFTWOOD